



RETAIL SOLUTIONS

Video surveillance cameras have long been monitoring stores to increase security. Video solutions can reduce shoplifting and can be a remarkable aid in investigating potential internal collusions.

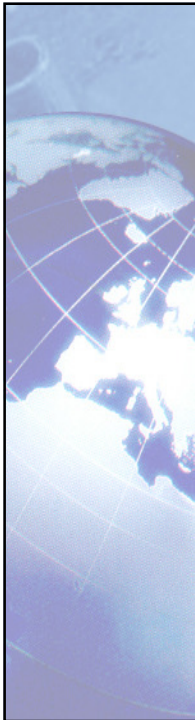
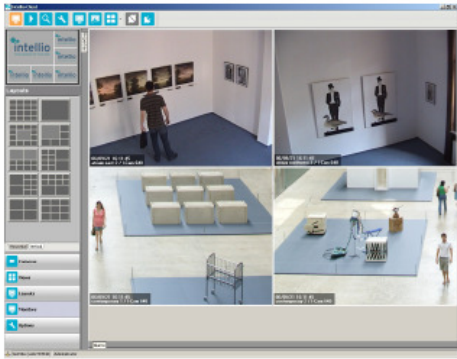
In addition to common security applications **Nimonic Solutions** system can provide statistical and management data to help manage the store with increased efficiency. The store management can analyze these statistical data to make decisions on product placement, size of selling space to be allocated to different products, work assignment and administration, which can yield significant extra profits.

2



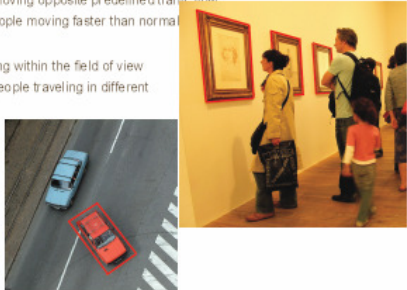
ON-BOARD INTELLIGENCE

- **parking violation** – detects parked cars in unauthorized areas
- **speed detection** – detects and records the speed of each car passing the camera
- **license plate recognition** – recognizes and stores license plates with the help of Adoptive Recognition, Hungary's world renowned license plate recognition module
- **obstacle detection** – detects objects or obstacles limiting, disrupting or blocking traffic flows
- **vehicle counting** – Counts the number of vehicles passing within the camera's field of view. It is able to differentiate between different object sizes, counting each category separately.



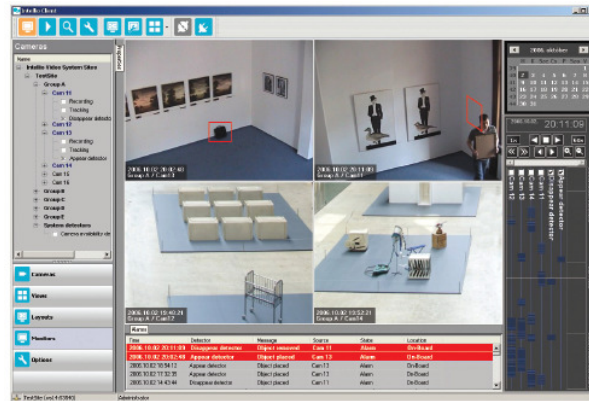
ON-BOARD INTELLIGENCE

- Human behavior monitoring**
- **crowd detection** – detects the formation of crowds which can be an indication of a security risk
 - **restricted zone protection** – detects people or objects entering restricted areas
 - **traffic flow violation** – detects people moving opposite predefined traffic flow
 - **running person detection** – detects people moving faster than normal human traffic flow
 - **people counting** – counts people passing within the field of view of the camera. It is able to differentiate people traveling in different directions, and count based on this.
- Object monitoring**
- **abandoned object detection** – detects objects which have been left unattended
 - **stolen object detection** – detects the removal of an object which has been put under protection of the camera.



SOFTWARE

Provides intelligent cameras –it has also developed software responsible for configuration, Management and monitoring to complement the intelligence of the cameras. Together, they provide a highly advanced video surveillance system.



5

SOFTWARE

- Event Handling – The software allows images captured by cameras to be viewed in custom layouts on a large number of monitors (monitor wall support). Alerts are displayed in a window so they don't obstruct the view of the user. Both visual and audio cues alert the user to an event (security breach).
- Event Playback – The software provides a separate interface for replaying images. Users can search the images based on past alarms and events, drastically reducing the time required to find and review stored images. All images are synchronized in time and the timeline interface can be fully customized to display only the relevant images to the user.

6